



1645-1673 Donlon
Industrial/office space available in Ventura

Lots of parking !

Rare small industrial !



- ❖ Unit 202 is approximately 2,300 rentable square feet. Composed of approximately 15% bull pen, office and restroom ,the balance is warehouse with approximately 20 foot high ceilings and 12 foot roll up door. \$2,400 per month Plus \$75 / month trash fee.
- ❖ 200 Amp 3 phase power in a sprinkled building
- ❖ Clean, well kept business park, close to amenities.
- ❖ Easy access to 101 freeway and local amenities.

For Information Contact::
Jim Darin

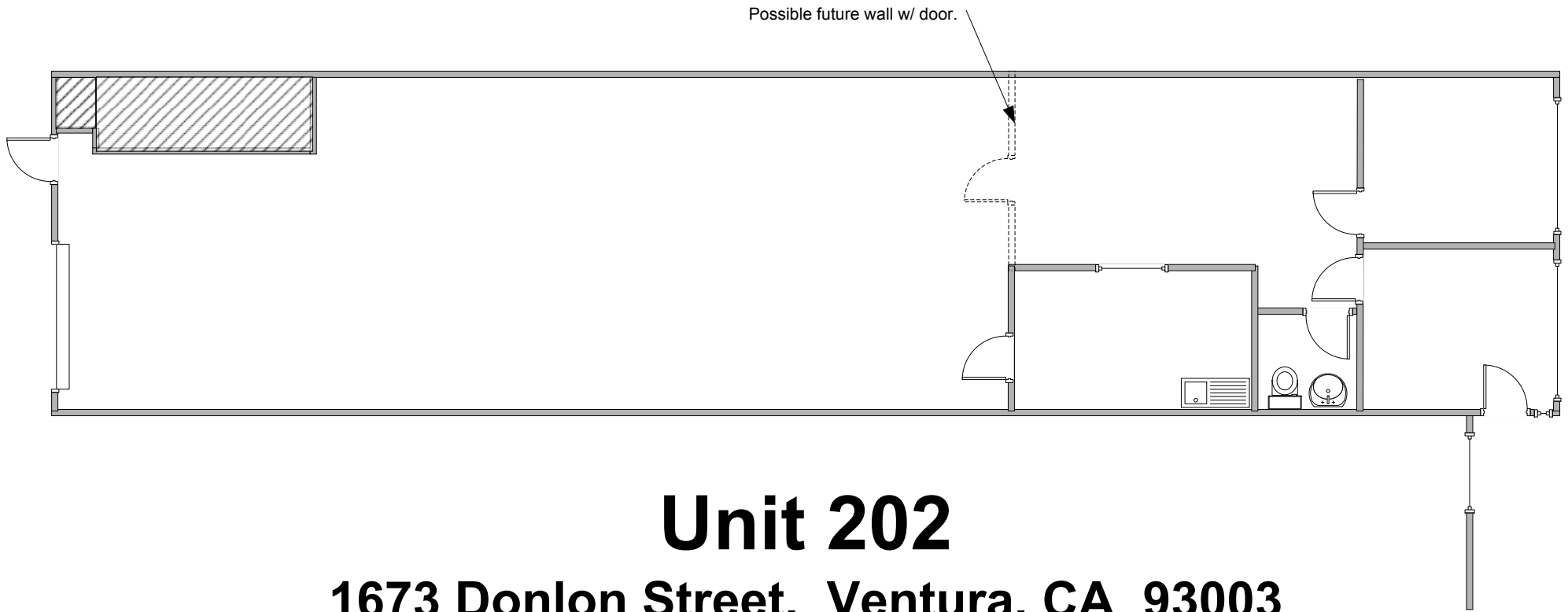
Westcord Commercial Real Estate Services DRE # 01266242

(805) 497-4557

jimdarin@jimdarin.com



951 Westlake Blvd. #101
Westlake Village, CA 91361
(805) 497-4557 * FAX (805) 496-3589
www.westcord.com



Unit 202

1673 Donlon Street, Ventura, CA 93003

2,328 SF

200 AMPS 3-Phs

Prepared By....



9410 Topanga Canyon Blvd., Suite 105
Chatsworth, CA 91311
(T) 818.717.0200 * (F) 818.717.0257
Website: www.tscorealestate.com
DRE License # 01264732

*These drawings are provided as an illustration of the available space.
All dimensions are approximate. Prospect is advised to verify physical dimensions.*